

BOATS

Stable and safe boat for up to three people (one adult and two children), ideal for lazy rivers or open water.

- Capacity: 2 adults or 1 adult and 2 kids.
- Age range: 3 and up.
- Speed: Approx. 3 km/h, 1,9 mph (programmable +/- 10%).
- Maximum weight admitted: 180 kg, 400 lbs.



CUSTOMIZE YOUR BOAT:

DECOR:

Custom decors on request

COLOR:

- Red
 - Orange
 - Yellow
 - Blue
- Custom colors on request

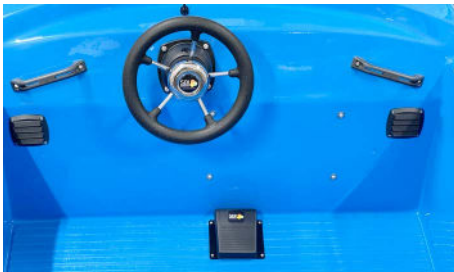
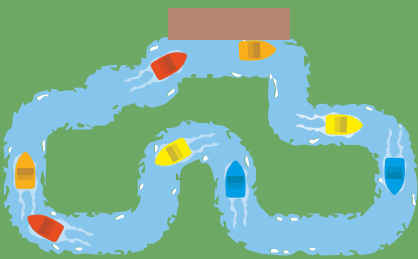
OPTIONS:

- Sound
- Light



DESIGN YOUR LAZY RIVER LAYOUT:

We assist in creating your perfect space-efficient layout.



CAPACITY / THRC (Per Unit)

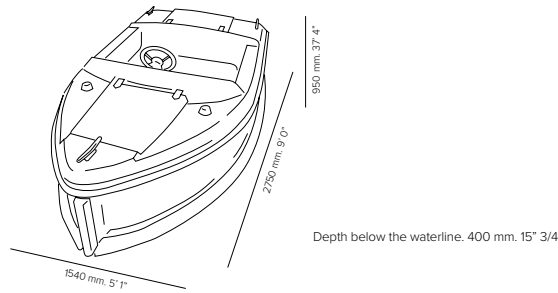
12 –36 persons per hour based on a 5 min ride cycle.

CAPACITY / THRC (example with 10 boats)

Up to 240 persons per hour based on 2 persons per boat and a 5 min ride cycle



Boats



TECHNICAL SPECIFICATIONS

Stable and safe boat for up to three people (one adult and two children), ideal for lazy rivers or open water.

FEATURES

Capacity: 2 adults or 1 adult and 2 kids.

Age range: 3 and up.

Maximum weight admitted: 180 kg, 400 lb.

Speed: Approx. 3 km/h, 1,9 mph (programmable +/- 10%).

Length: 2750 mm, 9' 0".

Width: 1540 mm, 5' 1".

Height: 950 mm, 3' 1".

Boat weight: Approx 290 kg, 639 lb. (incl. battery).

Hull/Deck: Hand-laid GRP, 2 layers gelcoat, 3 layers mat, and reinforced by laminate. Non-slip surface on seats and floor.

Color: Standardized colors available in Red, Orange, Yellow and Blue.

Bumpers: Rubber front, side, and rear fenders.

Height over Water Line: 550 mm, 1' 8".

Water depth: Minimum 600 mm, 2'.

Turning diameter: 10 m, 33'.

Electrical system: 24 V.

Motor: Electric, sealed under-water motor. Purpose built for both propulsion and steering action.

Motor controller: Fully automatic.

Battery: 4 x Gel Type VRLA 6 V 180 Ah.

Battery weight: Approx. 30 kg / 66 lb each. Operating time: 8 – 10 hours.

Battery charger: 3 Step charger, fully automatic (24 V 20 A).

Acceleration: Air pedal with pressure switch.

Steering: Heavy Duty Hydraulic Steering System.

Shipping parameters:

1 Unit: Dimensions 2750 x 1650 x 1400 mm, 9' x 5'5" x 4'7".

Weight Approx 320 kg, 705 lb.

2 Units: Dimensions 2750 x 1650 x 2100 mm, 9' x 5'5" x 7'1".

Weight Approx 620 kg, 1366 lb.

Package: Custom built stand on wheels.

NOTE

To emphasize that the boat meet high safety standards, all products are clearly labeled with the requirements users should be aware of to ensure compliance with these standards.



SET-UP AND OPTIONS

PRODUCT	INCLUDED	OPTIONAL
Free Drive Setup	•	
Regular Gel Battery	•	
Battery Charger	•	
LED lights. Port and Starboard light	•	
Cleats	•	
Fully automatic Bilge pump	•	
Lithium Battery System		•
LED Lights & Sounds		•
Custom body colors		•
Custom Theming		•
Full Customization		•
Custom decor		•

AREA

Depending on location and setup

CAPACITY / THRC

(Example with 10 boats) Up to 240 rides per hour based on 2 persons per boat and a 5 min ride cycle.

CERTIFICATES

Quality: ISO 9001, ISO 14001. CE marking.

3D / BIM (Building Information Modeling)

Revit and DWG models are available.



Scan to visit the productpage:

<https://sbisweden.com/concepts-and-products/boating-school-boats/>

